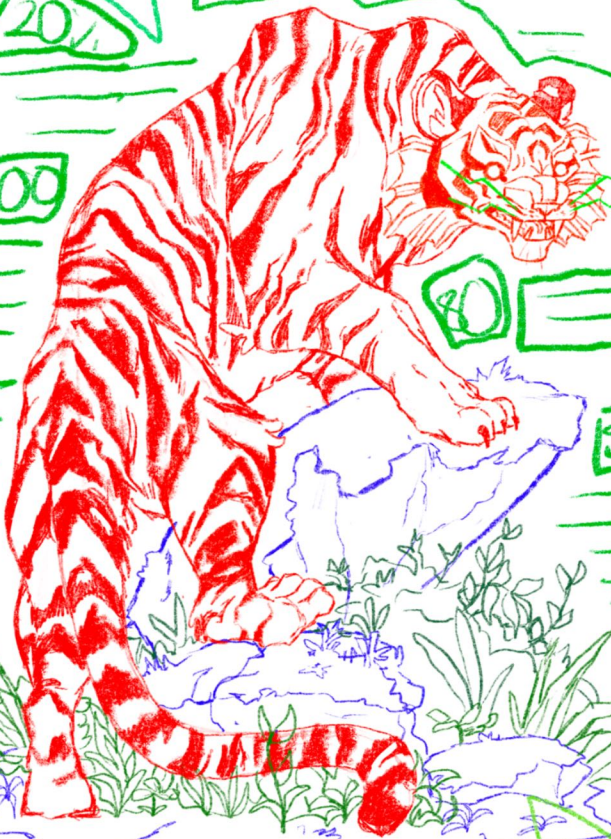


INDONESIAN RAINFORESTS

INTRO



1000

10%

1000





Prepare to begin your adventure across Hyrule by studying this helpful manual detailing the variety of creatures you will meet traveling across the different lands.

From the barren Gerudo desert, the icy Akalla Tundra and the Fair forest, Hyrule is overflowing with a plethora of animals that will amaze and terrify you.

To avoid meeting a horrific end to your journey, and to get the most out of your travels, this manual will be your guide.



HUMAN ANATOMY

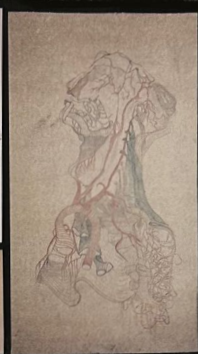
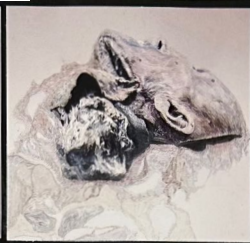
THE HUMAN BODY IS COMPOSED OF LIVING CELLS AND EXTRACELLULAR MATERIALS, AND IS ORGANIZED INTO TISSUES, ORGANS, AND SYSTEMS.



HUMAN ANATOMY

THE HUMAN BODY IS COMPOSED OF LIVING CELLS AND EXTRACELLULAR MATERIALS, AND ORGANIZED INTO TISSUES, ORGANS, AND SYSTEMS.



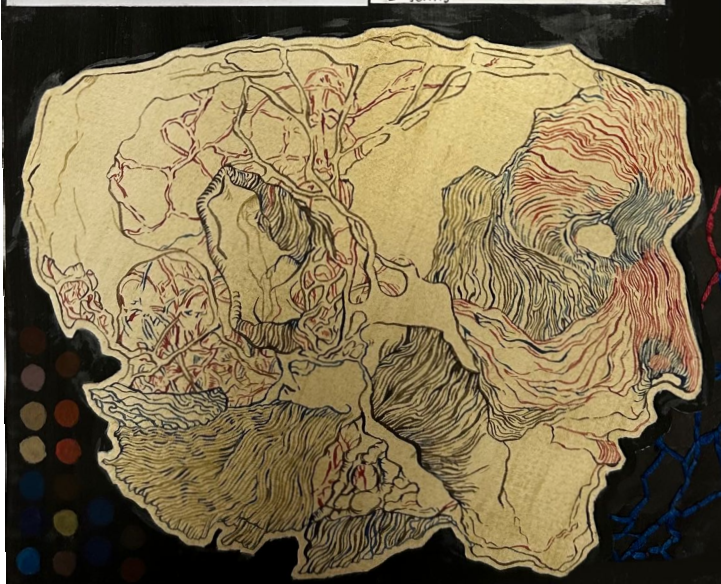
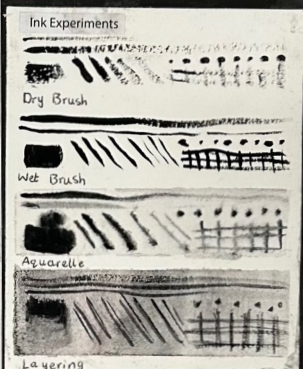


Magdalena Dukiewicz

The intention of Magdalena's work is to re-contextualise stigmatised topics in society. An example of this in her work is the human body which is often under-appreciated in our everyday lives. Magdalena's pieces reveal the beauty of the human body and the complexity of the systems beneath our skin. Her work can provoke visceral reactions due to its sometimes disturbing and macabre theme, which is successful in creating discussions between viewers about the taboo nature of these themes.

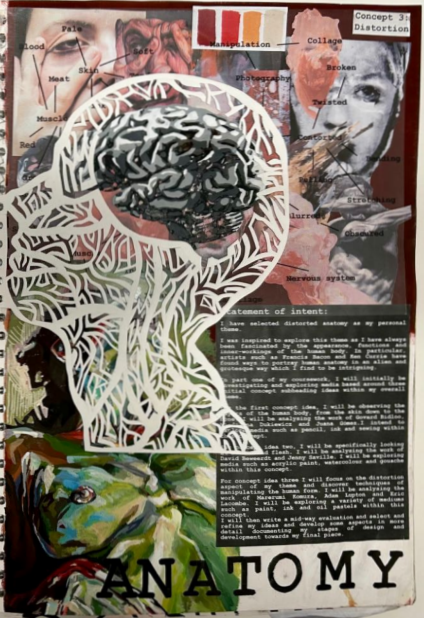
Her work is created using a mixture of inks and watercolours on often coloured backgrounds. She uses a very fine paintbrush to achieve intricate line work.

Line is crucial in her pieces as the frequency of the lines can indicate shadow, and their direction creates form and dimension. Her work generally has an area of intense contrast and the surrounding area is more delicate and faded. This creates fascinating compositions with your eyes naturally following the direction of the brush strokes, leading the viewer to the area of hyper contrast and colour. The colour palettes she uses are limited and quite apart from one or two powerful and vibrant hues that are used sparsely.



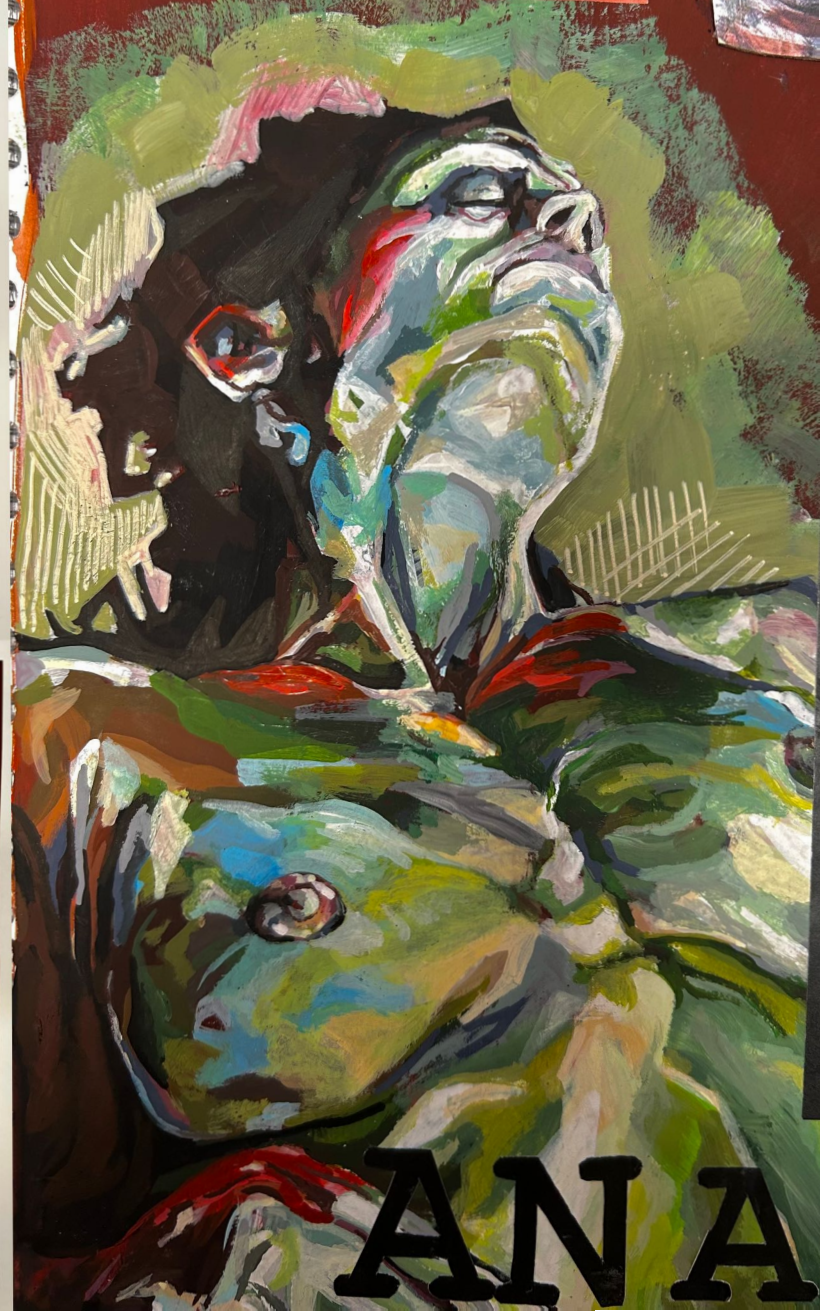
DISTORTED

INITIAL IDEAS:



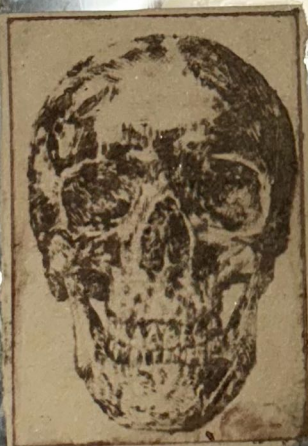
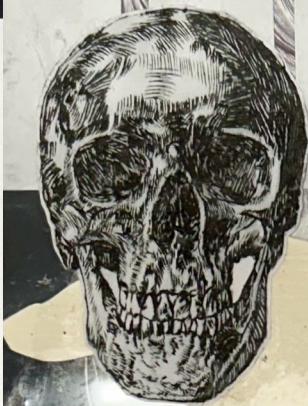
DISTORTED

INITIAL IDEAS:









HEART PRIMARY PHOTOS

To learn more about human anatomy and the appearance of our muscles and flesh, I went to the butchers to view different types of meat and muscle. One such organ I studied was a cow heart which I took home to dissect.

The variation in the hearts texture and appearance was incredibly helpful in allowing me to understand the different textures I should aim to achieve in my painting.









Adam Lupton:

Adam Lupton is an American painter who specializes in oil painting portraits. His artwork always involves some form of distortion in the anatomy of the face or body with parts being cut away giving a fragmented appearance to the form. In some pieces he takes this distortion even further by cutting up his paintings and interweaving the pieces to create a new image. He also commonly uses thread to attach parts of paintings to his canvas.

A focal point of his work is the small sections of intense, saturated color—often being bright yellows and striking reds. As a painter, he also utilizes the direction of his brushstrokes to indicate depth and form, also sometimes smearing his paint to create abstractions.

These distorted paintings tackle themes such as compulsions, identity and mental health. The viewer is left with an image that shows individuals as torn apart.





David Bewerdt
 Bewerdt is a Belgian expression painter who creates figures of the human form using mixed ink and acrylic. His work is often described as 'nightmarish' for its macabre themes and gory nature.

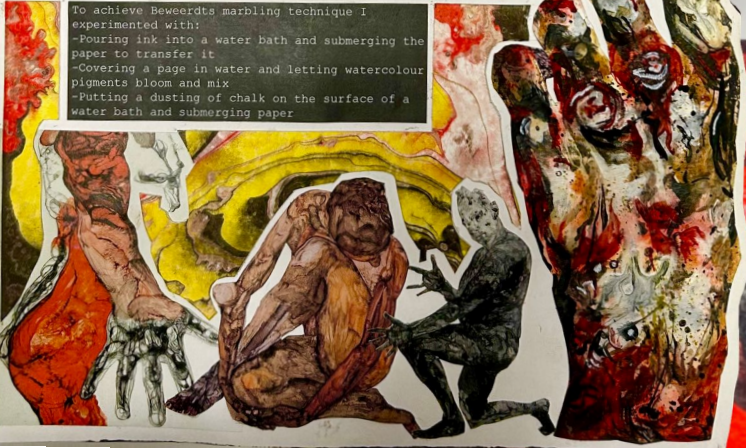
He creates his pieces through a variety of techniques to create different textures. A common technique in his work is acrylic marbling, in which he pours acrylic paints onto the paper so that they may blend and mix with each other. He also experiments with diluting the paints, guiding them with sticks and brushes to create swirls and blossoms in the paint.

The compositions of the work often involve large sections of white space so that the vibrant areas of colour lift off the page. The swirls in the paint itself is also a key part of the compositions as they can draw the eye to parts of the painting such as the knuckles on a hand or the area surrounding the eye.

The canvas on which he works is generally very large, so he can have room to experiment with the paints. Consequently his work is quite imposing to look at as it towers above the viewer, thus emphasising the frightening aspect of his paintings. I intend to also experiment with paint, following the technique of Bewerdt in order to replicate the different textures found in the flesh and muscle.



To achieve Bewerdt's marbling technique I experimented with:
 -Pouring ink into a water bath and submerging the paper to transfer it.
 -Covering a page in water and letting watercolour pigments bloom and mix.
 -Putting a dusting of chalk on the surface of a water bath and submerging paper.





Jenny Saville
Blending the line between modern abstraction and classical observation, Jenny Saville is an English painter who is well known for her oil painted depictions of the human body. Her painting is done through the layering of oils to create a surface 'as visceral as flesh itself'. She uses cards and brushes to scrape and push the paint across the surface to distort the subject. This is incredibly effective in creating texture on the surface and thus creating interest within the piece.
The composition of her work features drastic perspectives, looking at the body or the face from unexpected angles, and therefore revealing areas of the human body that are sometimes hidden.
The colour palettes of her pieces are often warm and saturated, with bright reds and hot pinks being present within the hues of the skin. This exaggeration of the skin's colouration creates beautiful abstracted images of the flesh.
Saville's work will inspire my painting as I wish to experiment with the scraping of paint across the page as well as using more saturated colours around points of interest.

